



Quick Start Stock Recorder - Canada



The entire Stock Recorder user guide is on the installation CD you received. Installing FarmWorks automatically loads the user guide onto your computer - click on the desktop link to open the guide.

1.

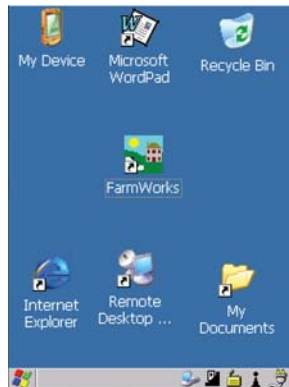
Load your farm details

You cannot use your stock recorder until you have sent your farm details from FarmWorks on the computer to your stock recorder.

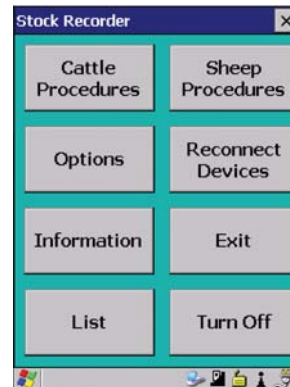
Data Transfer - Send data to the stock recorder

- » Place the stock recorder firmly in the cradle, with the power and USB leads connected. See the stock recorder installation guide for more detail.
- » The stock recorder desktop must be visible, with FarmWorks closed.

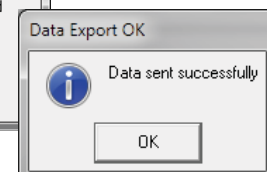
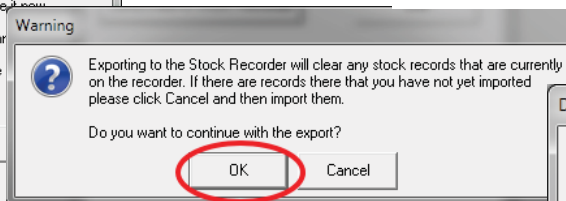
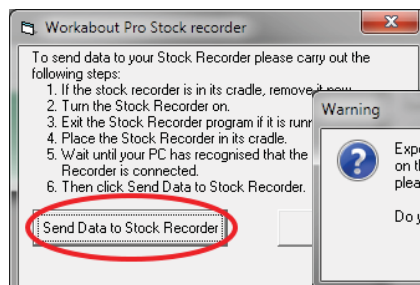
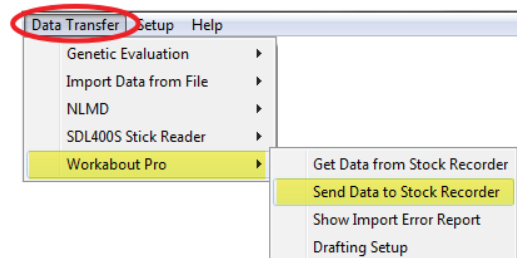
Stock recorder desktop - FarmWorks closed



Stock recorder desktop - FarmWorks open



- » Open Windows Mobile Device Center on your computer. (Look for a green circle icon or use the search function. See the stock recorder installation guide for more help with this program.)
- » Look for the green tick to show the stock recorder is connected.
- » Open FarmWorks on your computer.
- » Go to **Data Transfer > Workabout Pro > Send Data to Stock Recorder**.
- » Click on **Send Data to Stock Recorder**
- » Note the warning message but carry on if this is the first time you are transferring data- click **OK**.
- » If your data was successfully transferred then your stock recorder is ready to use.





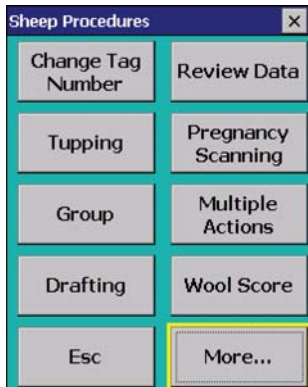
Quick Start Stock Recorder - Canada

2.

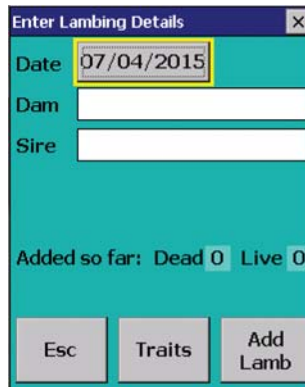
Touchscreen

- » Double-tap the FarmWorks icon with the stylus or your finger to open the program.
- » Lightly tap with the stylus or your finger to select an item on the screen.
- » Move between procedure screens by tapping the **More...** button on the bottom right.
- » A yellow box is visible around any button or field that has been selected.
- » Change a date by tapping the Date button to select a new date from the calendar.

Yellow box around the More... button.



Yellow box around the date button.



Pick a new day, month or year, then tap Enter



3.

Keyboard

You can enter information, including tag numbers, by typing on the stock recorder keyboard.

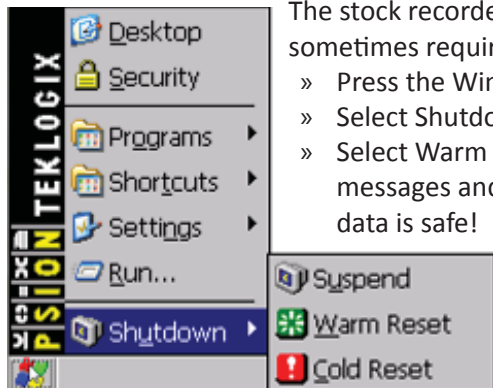
The stock recorder has a Windows keyboard:

- » Use the **Shift** key for uppercase letters.
- » Use the **Backspace** key to delete.
- » **Escape** takes you back one screen.



4.

Restarting



The stock recorder is a handheld computer; closing it down and restarting is sometimes required.

- » Press the Windows key.
- » Select Shutdown.
- » Select Warm Reset to restart the stock recorder. This will clear any error messages and resolve most problems. Don't worry - your FarmWorks data is safe!



Quick Start Stock Recorder - Canada

5.

Scanning EID tags

The stock recorder has two side buttons, one on the left and one on the right. The right-hand button is for reading EID tags; the button on the left is for looking up animal details.
- Think “*Right to Read*” tags and “*Left to Look*” at details.

To scan an EID tag, you must be on a tag field, in one of the procedures on the stock recorder.

Antennae



Right side button - for reading EID tags

- » Check that the yellow box is around the tag field, and the cursor is blinking.
- » Press and release the right-side scan button.
- » A beeping sounds indicates the stock recorder is scanning for a tag.
- » Bring the stock recorder antennae close to the ear tag.
- » The EID number will be displayed.

Whenever a tag number is in a tag field, press and release the left-side button to look up animal details or type in comments.

Yellow box around the dam tag field.

Enter Lambing Details

Date 07/04/2015

Dam

Sire

Press and release the right-side scan button

Tag number fills the dam tag field.

Enter Lambing Details

Date 16/04/2015

Dam ALC 520Y

Sire

6.

Adding animals and locking to EID tags

Sheep can be entered into FarmWorks by scanning their RFID tags with the stock recorder and entering their details.

- » Open the **Review Data** screen on the stock recorder.
- » Scan a sheep’s RFID tag. Type in the tag number you want to use. Tap **Lock**.
- » If that sheep is already in FarmWorks then the EID will be locked to its record.
- » If that sheep is not in FarmWorks you can create a new animal record. Tap **Yes** to create a new record.
- » Add animal details - tap the **DOB** button to change the date of birth.
- » Tap **Sex** to select a gender.
- » Tap **Breed** to select a breed. To see more breeds, select **Other**. To jump through the list faster, type the first letter of the sheep breed you’re looking for. (S for Suffolk, T for Texel, etc.)
- » Press **Save** to finish. A new animal record has been created.
- » These animal records will be added to FarmWorks when you **Get Data from Stock Recorder** at the next Data Transfer to the computer.

<p>Review Data</p> <p>Tag <input type="text"/></p> <p>Count 0 <input type="button" value="Clear count"/></p> <p>DOB</p> <p>Sex</p> <p>Breed</p> <p>RF Tag</p> <p>M. Tag</p> <p><input type="button" value="Esc"/> <input type="button" value="Configure Display"/></p>	<p>Lock RF Device</p> <p>This RF device is not locked to an animal. If you wish to link it now, type tag number below and press 'Lock'.</p> <p>Tag <input type="text" value="612A"/></p> <p>RF 0124000315772515</p> <p><input type="button" value="Esc"/> <input type="button" value="Lock"/></p>	<p>Select Option</p> <p>No details are recorded against tag 612A</p> <p>Do you want to create a new animal record now?</p> <p><input type="button" value="Yes"/> <input type="button" value="No"/></p>	<p>Enter Animal Details</p> <p>Tag 612A</p> <p>Flock <input type="text" value="ALC"/></p> <p>DOB <input type="text" value="01/03/2013"/></p> <p>Sex <input type="button" value="Ewe"/></p> <p>Breed <input type="button" value="Rideau"/></p> <p><input type="button" value="Esc"/> <input type="button" value="Save"/></p>
--	---	--	---



Quick Start Stock Recorder - Canada

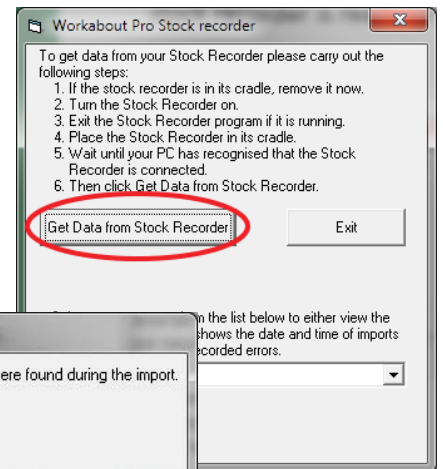
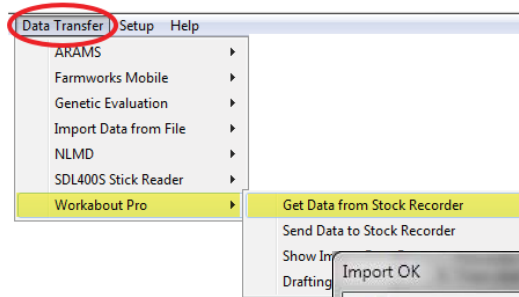
8.

Data Transfer - Get Data from Stock Recorder

The information you collect with the stock recorder must be transferred into FarmWorks. Make a habit of getting data from the stock recorder often, particularly during critical times like lambing.

Data Transfer - Get data from stock recorder

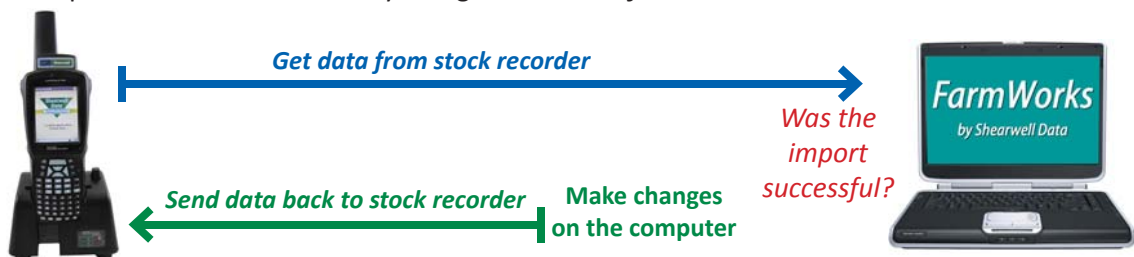
- » Place the stock recorder firmly in the cradle, with the power and USB leads connected. See the stock recorder installation guide for more detail.
- » The stock recorder desktop must be visible, with FarmWorks closed.
- » Open Windows Mobile Device Center on your computer. (Look for a green circle icon or use the search function. See the stock recorder installation guide for more help with this program.)
- » Look for the green check mark to show the stock recorder is connected.
- » Open FarmWorks on your computer.
- » Go to **Data Transfer > Workabout Pro > Get Data from Stock Recorder**.
- » Click on **Get Data from Stock Recorder**.
- » A message confirms your data was successfully transferred.



9.

Synchronizing your FarmWorks data

It is critical that FarmWorks on the stock recorder and FarmWorks on the computer are synchronized regularly. Whenever you make changes or add information into FarmWorks on the computer, you must update the stock recorder by doing a **Data Transfer > Send Data to Stock Recorder**.



Data collected on the stock recorder should be transferred into FarmWorks on the computer as soon as possible by doing a **Data Transfer > Get Data from Stock Recorder**.



For technical support telephone: 780 - 674 - 9564

Email technical support at: casupport@shearwell.co.uk